



County of Cumberland

NORTH CAROLINA



Comprehensive
Annual
Financial
Report

Fiscal Year June 30, 2005

COUNTY OF CUMBERLAND
NORTH CAROLINA

Board of County Commissioners

John T. Henley, Jr, Chairman

Billy R. King, Vice Chairman
J. Breeden Blackwell
Kenneth S. Edge

Talmage S. Baggett, Jr.
Jeannette M. Council
Diane Wheatley

Comprehensive Annual
Financial Report

For the Year Ended June 30, 2005

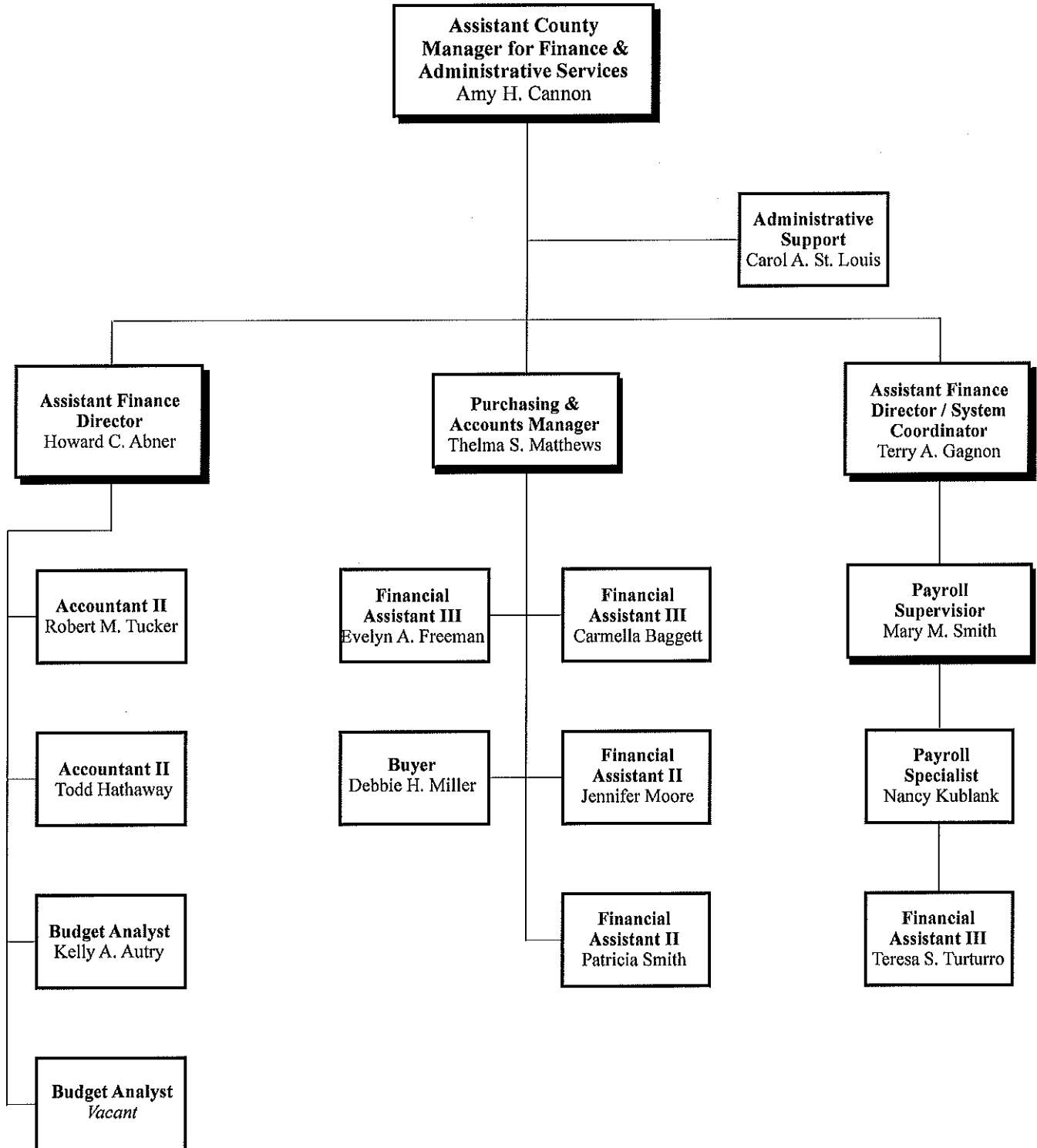
Prepared by:
Cumberland County Finance Department

County Officials

County Manager
County Attorney
Deputy County Manager
Assistant County Manager
Assistant County Manager

James E. Martin
Grainger Barrett
Juanita Pilgrim
Amy H. Cannon, CPA
Cliff Spiller

COMPREHENSIVE ANNUAL FINANCIAL REPORT
COUNTY OF CUMBERLAND, NORTH CAROLINA
Year Ended June 30, 2005
Prepared by the Finance Department



COUNTY OF CUMBERLAND, NORTH CAROLINA

**Comprehensive Annual Financial Report
Year Ended June 30, 2005**

Table of Contents

	<u>Page No.</u>
INTRODUCTORY SECTION (UNAUDITED)	
TRANSMITTAL LETTER	A1-A13
CERTIFICATE OF ACHIEVEMENT	A14
ORGANIZATIONAL CHART	A15
FINANCIAL SECTION	
INDEPENDENT AUDITOR'S REPORT	B1-B2
MANAGEMENT'S DISCUSSION AND ANALYSIS	C1-C12
BASIC FINANCIAL STATEMENTS	
Government-wide Financial Statements:	
Statement of Net Assets	D1
Statement of Activities	D2
Fund Financial Statements:	
Balance Sheet – Governmental Funds	E1
Reconciliation of the Balance Sheet of Governmental Funds to the Statement of Net Assets	E2
Statement of Revenues, Expenditures and Changes in Fund Balances – Governmental Funds	E3
Reconciliation of the Statement of Revenues, Expenditures and Changes in Fund Balances of Governmental Funds to the Statement of Activities	E4
Statement of Revenues, Expenditures and Changes in Fund Balances – Budget and Actual – General Fund	E5
Statement of Net Assets – Proprietary Funds	E6
Statement of Revenues, Expenses and Changes in Fund Net Assets – Proprietary Funds	E7
Statement of Cash Flows – Proprietary Funds	E8

COUNTY OF CUMBERLAND, NORTH CAROLINA

**Comprehensive Annual Financial Report
Year Ended June 30, 2005**

Table of Contents (continued)

FINANCIAL SECTION (continued)

Page No.

Statement of Fiduciary Net Assets – Fiduciary Funds	E9
Statement of Changes in Fiduciary Net Assets – Fiduciary Funds	E10
Notes to the financial statements	F1-F50

REQUIRED SUPPLEMENTARY INFORMATION

Law Enforcement Officers' Special Separation Allowance - Required Supplementary Information - Schedule of Funding Progress	G1
Law Enforcement Officers' Special Separation Allowance - Required Supplementary Information - Schedule of Employer Contributions and Notes to Required Schedules	G2
Health System Pension Plan - Required Supplementary Information - Schedule of Funding Progress	G3
Health System Pension Plan - Required Supplementary Information - Schedule of Employer Contributions and Notes to Required Schedules	G4

COMBINING AND INDIVIDUAL FUND STATEMENTS AND SCHEDULES

GENERAL FUND

Comparative Balance Sheets - General Fund	H1
Schedule of Revenues, Expenditures, and Changes in Fund Balance - Budget and Actual - General Fund	H2-H9

CAPITAL PROJECT FUND

Schedule of Revenues, Expenditures, and Changes in Fund Balance – Budget and Actual – 2004 School Bond Fund	H10
---	-----

NONMAJOR GOVERNMENTAL FUNDS

Combining Balance Sheet - Nonmajor Governmental Funds	I1
Combining Statement of Revenues, Expenditures, and Changes in Fund Balances - Nonmajor Governmental Funds	I2

NONMAJOR SPECIAL REVENUE FUNDS

Combining Balance Sheet - Nonmajor Special Revenue Funds	J1-J2
Combining Statement of Revenues, Expenditures and Changes in Fund Balances - Nonmajor Special Revenue Funds	J3-J4

COUNTY OF CUMBERLAND, NORTH CAROLINA

**Comprehensive Annual Financial Report
Year Ended June 30, 2005**

Table of Contents (continued)

FINANCIAL SECTION (continued)

Page No.

Schedule of Revenues, Expenditures, and Changes in Fund
Balances - Budget and Actual:

Prepared Food and Beverage Fund	J5
County School Fund	J6
911 Emergency Fund	J7
Wireless 911 Emergency Fund	J8
Jobs Training Fund	J9
Industrial Development Fund	J10
Water and Sewer Fund	J11
Property Revaluation Fund	J12
Recreation Fund	J13
Juvenile Crime Prevention Fund	J14
Transportation Fund	J15
Flea Hill Drainage District Fund	J16
Community Development Fund	J17
Fire Protection Fund	J18
Federal Drug Forfeiture Fund	J19
Federal Forfeiture Treasury Fund	J20
North Carolina Controlled Substance Fund	J21
Injured Animal Stabilization Fund	J22
Downtown Revitalization Fund	J23
Inmate Welfare Fund	J24
Tourism Development Authority Fund	J25

NONMAJOR CAPITAL PROJECT FUNDS

Combining Balance Sheet – Nonmajor Capital Project Funds	K1
--	----

Combining Statement of Revenues, Expenditures, and Changes in Fund Balances – Nonmajor Capital Project Funds	K2
---	----

Schedule of Revenues, Expenditures, and Changes in Fund
Balance - Budget and Actual:

Library Bond Fund	K3
Detention Facility Fund	K4
Capital Project Bond Fund	K5
Social Services/Community Corrections Fund	K6
Winding Creek Renovation Fund	K7
1998 School Bond Fund	K8
Animal Control Building Fund	K9
Sheriff Training Facility Fund	K10
Averasboro Battlefield Fund	K11

COUNTY OF CUMBERLAND, NORTH CAROLINA

**Comprehensive Annual Financial Report
Year Ended June 30, 2005**

Table of Contents (continued)

FINANCIAL SECTION (continued)		<u>Page No.</u>
NONMAJOR PERMANENT FUND		
Schedule of Revenues, Expenditures, and Changes in Fund Balance - Budget and Actual - Cemetery Permanent Fund		L1
ENTERPRISE FUNDS		
Schedule of Revenues and Expenditures - Budget and Actual (Non-GAAP):		
Cumberland County Solid Waste Fund		M1
Cumberland County Crown Center Fund		M2
Schedule of Revenues, Expenditures, and Changes in Fund Balance - Budget and Actual - Solid Waste Cell Construction Fund		M3
Schedule of Revenues and Expenditures - Budget and Actual (Non-GAAP):		
Kelly Hills Water and Sewer District Fund		M4
NORCRESS Water and Sewer District Fund		M5
INTERNAL SERVICE FUNDS		
Combining Statement of Net Assets - Internal Service Funds		N1
Combining Statement of Revenues, Expenses, and Changes in Fund Net Assets - Internal Service Funds		N2
Combining Statement of Cash Flows - Internal Service Funds		N3
Schedule of Revenues and Expenditures - Budget and Actual (Non-GAAP):		
Group Insurance Fund		N4
Employee Flexible Benefit Fund		N5
Workers' Compensation Fund		N6
General Litigation Fund		N7
AGENCY FUNDS		
Combining Statement of Fiduciary Assets and Liabilities - Agency Funds		O1
Combining Statement of Changes in Fiduciary Assets and Liabilities - Agency Funds		O2

COUNTY OF CUMBERLAND, NORTH CAROLINA

**Comprehensive Annual Financial Report
Year Ended June 30, 2005**

Table of Contents (continued)

FINANCIAL SECTION (continued)

Page No.

AGENCY FUNDS (continued)

Combining Statement of Fiduciary Assets and Liabilities – Agency Fund - City Tax Fund	O3
--	----

DISCRETELY PRESENTED COMPONENT UNIT – EASTOVER SANITARY DISTRICT

Statement of Net Assets	P1
Statement of Revenues, Expenses and Changes in Fund Net Assets	P2
Statement of Cash Flows	P3
Schedule of Revenues and Expenditures - Budget and Actual (Non-GAAP) - Eastover Sanitary District Fund	P4
Schedule of Revenues, Expenditures, and Changes in Fund Balance - Budget and Actual - Eastover Water Capital Project Fund	P5
Schedule of Revenues, Expenditures, and Changes in Fund Balance – Budget and Actual – Eastover Sewer Capital Project Fund	P6

OTHER SUPPLEMENTAL FINANCIAL DATA

Schedule of Current Tax Levy	Q1
Schedule of Ad Valorem Taxes Receivable	Q2
Schedule of Transfers	Q3-Q5

STATISTICAL SECTION (UNAUDITED)

General Governmental Expenditures by Function - Table 1	R1
General Governmental Revenues by Source - Table 2	R2
General Governmental Tax Revenues by Source - Table 2A	R2
Property Tax Levies and Collections - Table 3	R3
Assessed and Estimated Actual Value of Property - Table 4	R4
Property Tax Rates - Direct and Overlapping Governments - Table 5	R5
Principal Taxpayers - Table 6	R6
Special Assessment Billings and Collections - Table 7	R7
Computation of Legal Debt Margin - Table 8	R8

COUNTY OF CUMBERLAND, NORTH CAROLINA

**Comprehensive Annual Financial Report
Year Ended June 30, 2005**

Table of Contents (continued)

FINANCIAL SECTION (continued)

Page No.

STATISTICAL SECTION (UNAUDITED) (continued)

Ratio of Net General Bonded Debt to Assessed Value and Net Bonded Debt Per Capita - Table 9	R9
Ratio of Annual Debt Service Expenditures for General Obligation Bonded Debt to Total General Governmental Fund Type Expenditures - Table 10	R10
Computation of Direct and Overlapping Bonded Debt - General Obligation Bonds - Table 11	R11
Demographic Statistics - Table 12	R12
Property Value, Construction and Bank Deposits - Table 13	R13
Miscellaneous Statistics - Table 14	R14-R15

COMPLIANCE SECTION

Report on Internal Control Over Financial Reporting and on Compliance and Other Matters Based on an Audit of Financial Statements Performed in Accordance with <u>Government Auditing Standards</u>	S1
Report on Compliance with Requirements Applicable to Each Major Federal Program and Internal Control Over Compliance in Accordance with OMB Circular A-133 and the State Single Audit Implementation Act	S2-S3
Report on Compliance with Requirements Applicable to Each Major State Program and Internal Control Over Compliance in Accordance with Applicable Sections of OMB Circular A-133 and the State Single Audit Implementation Act	S4-S5
Schedule of Findings and Questioned Costs	S6-S8
Corrective Action Plan	S9
Summary Schedule of Prior Audit Findings	S10
Schedule of Expenditures of Federal and State Awards and Notes	S11-S17

CONTINUING DISCLOSURE INFORMATION SECTION (UNAUDITED)

Securities Exchange Commission Rule 15c2-12 Reporting	T1-T10
---	--------