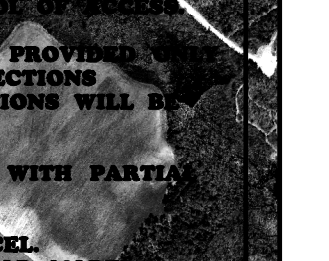
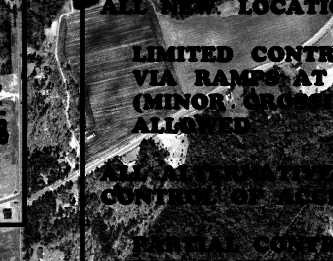
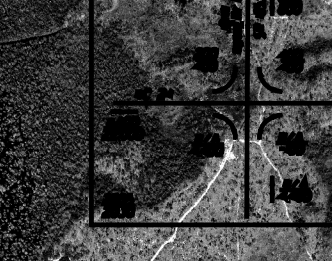
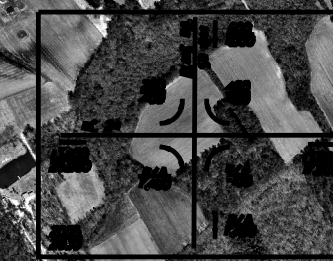
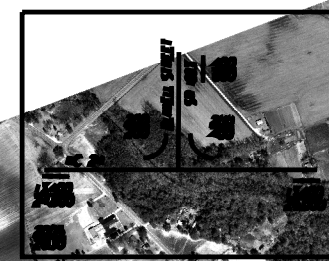
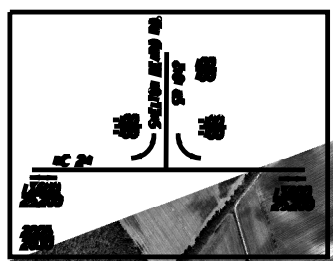
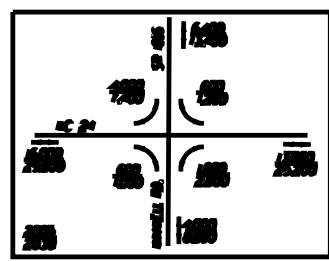
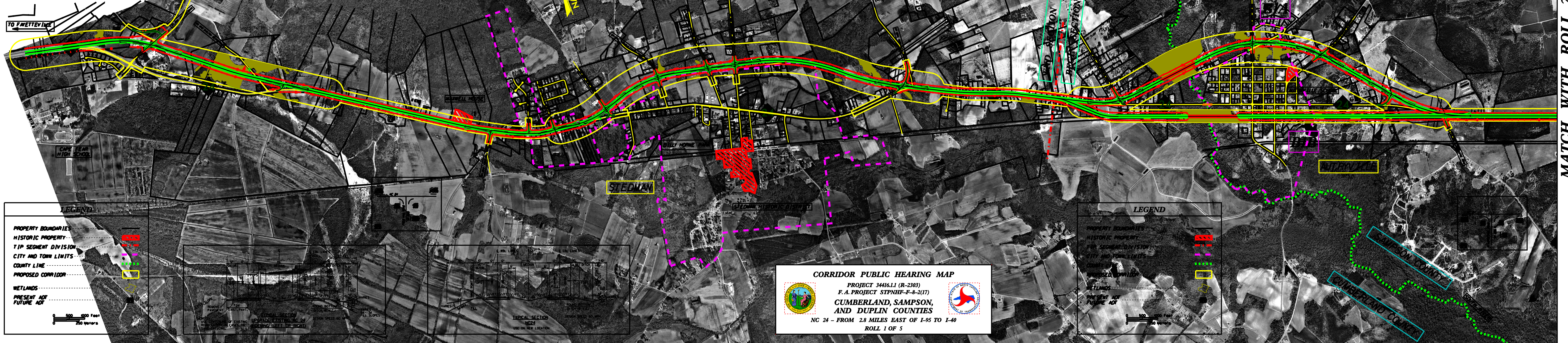


ALL NEW LOCATION ALTERNATIVES WILL BE DESIGNED WITH LIMITED CONTROL OF ACCESS.
LIMITED CONTROL OF ACCESS IS DEFINED AS CONNECTIONS TO A FACILITY PROVIDED ONLY
VIA RAMP AT INTERCHANGES (MAJOR CROSSINGS) AND AT-GRADE INTERSECTIONS
(MINOR CROSSINGS AND SERVICE ROADS). NO PRIVATE DRIVEWAY CONNECTIONS WILL BE
ALLOWED.
ALL ALTERNATIVES FOLLOWING THE EXISTING ALIGNMENT WILL BE DESIGNED WITH PARTIAL
CONTROL OF ACCESS.
PARTIAL CONTROL OF ACCESS IS DEFINED AS ONE ACCESS POINT PER PARCEL.
FOR PROPERTIES WITH LARGE ROAD FRONTAGES (FOR EXAMPLE 2000 FEET OR MORE),
AN ADDITIONAL ACCESS POINT MAY BE CONSIDERED. FOR PROPERTIES THAT HAVE
ALTERNATE ACCESS, SUCH AS VIA A SIDE ROAD, ACCESS TO NC 24 MAY BE ELIMINATED.



BEGIN SECTION "A"



MATCH WITH ROLL 2